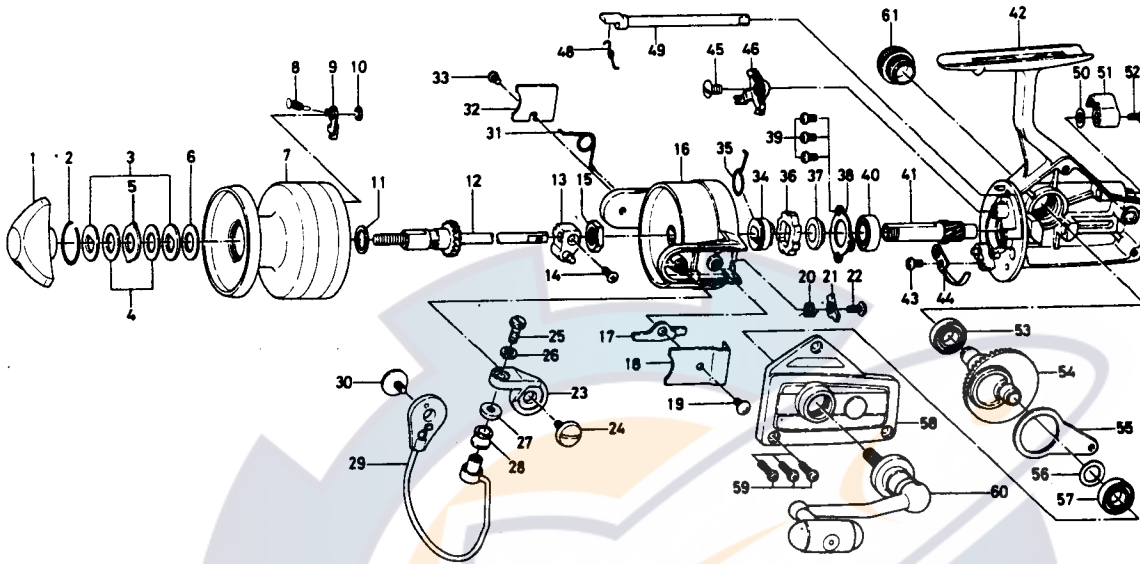


SPINNING REEL **GS-20X**



Key No.	Parts No.	Parts Name	Key No.	Parts No.	Parts Name
1	6-740-4501	Drag knob	31	6-145-2001	Bail spring
2	6-171-7701	Drag washer retainer	32	6-041-8801	Bail spring cover
3	6-376-4001	Drag D washer	33	6-351-6101	Bail spring cover screw
4	6-375-7802	Disc washer	34	6-502-1301	Spring holder
5	6-375-8002	Drag A washer	35	6-145-2901	Anti-reverse claw spring
6	6-375-7803	Drag washer A	36	6-280-9501	Ratchet
7	6-734-7102	Spool	37	6-636-6711	Click gear
8	6-145-2101	Spool click claw spring	38	6-635-9901	Ball bearing ret. washer
9	6-B07-8201	Spool click claw	39	6-351-6601	Ball bearing ret. washer screw
10	6-320-1402	Spool click claw retainer	40	6-635-4801	Ball bearing
11	6-376-3901	Spool washer	41	6-403-2801	Pinion gear
12	6-711-5701	Main shaft	42	6-701-7003	Body
13	6-637-3001	Oscillating support	43	6-351-6601	Cam kick plate screw
14	6-351-8901	Oscillating slider screw	44	6-B22-9901	Cam kick plate
15	6-B10-5701	Rotor nut	45	6-352-1102	Anti-reverse claw screw
16	6-202-1612	Rotor	46	6-B33-5601	Anti-reverse claw
17	6-571-1001	Bail kick lever	48	6-144-0321	Anti-reverse cam spring
18	6-041-8101	Bail kick lever cover	49	6-B15-6403	Anti-reverse cam
19	6-351-7701	Bail kick lever cover screw	50	6-373-2700	Anti-reverse lever washer
20	6-145-0701	Bail kick cam spring	51	6-541-7301	Anti-reverse lever
21	6-571-0901	Bail kick cam	52	6-352-2501	Anti-reverse lever screw
22	6-351-4701	Bail kick cam screw	53	6-636-6011	Ball bearing
23	6-231-3501	Arm lever	54	6-414-2302	Drive gear
24	6-363-5201	Arm lever screw	55	6-481-2401	Oscillating slider
25	6-363-3111	Bail screw	56	6-371-2800	Drive gear washer
26	6-375-1101	Bail washer	57	6-636-6011	Ball bearing
27	6-501-2001	Roller collar	58	6-707-1303	Body cover
28	6-250-4321	Line roller	59	6-351-5901	Body cover screw
29	6-725-8513	Bail	60	6-748-0901	Handle
30	6-363-5201	Bail holder screw	61	6-363-4702	Handle screw cap